



SHIELD

AVR-LCD

Battery Back-up UPS

This manual contains important safety instructions
Keep this manual handy for future reference

Specifications

Capacity	600/800VA	1000/1500VA
Input voltage	145-290Vac±5Vac	
Output voltage	195-255Vac±5Vac	
Output wave-form	PWM/DC	
Output frequency	50Hz or 60Hz	
Battery rating	7Ah / 9Ah×1	7Ah / 9Ah×2
Back-up time	3 - 20 mins	
Noise level	Less than 45dB	
Operating temperature	0 ~ 45°	

Capacity	2000/3000VA
Input voltage	175-275Vac±5Vac
Output voltage	198-242Vac±5Vac
Output wave-form	PWM/DC
Output frequency	50Hz or 60Hz
Battery rating	7Ah / 9Ah×4
Back-up time	3 - 20 mins
Noise level	Less than 45dB
Operating temperature	0 ~ 45°

UPS Working Modes

Test the UPS on Battery back-up

To test the UPS on battery back-up, disconnect or switch off the utility power supply. Your PC should continue to function normally.

Powering on the UPS

Push the main power button on the UPS to switch on the UPS. The LCD will come on and display and input and output voltage. After this, the UPS will be ready for operation.

Silence function

In battery mode, short press the main button to enable or disable the alarm. The alarm can not be turned off if the UPS is low on battery or is over loaded.

Auto-run

In battery mode, the UPS runs till the batteries are drained. After the batteries are drained, the UPS cuts off and switches back on automatically once the utility power is back.

Overload Protection

If the UPS has been overloaded when in operation, it will cut off power automatically to the load after its assigned overload alarm time.

Low battery shut-off

When the battery is about to be completely depleted, the UPS will shut down automatically so as to maintain good battery health.

Switching off the UPS

When utility power is normal

Press the main power button for 3 seconds to cut off UPS output and put the UPS on AC standby mode.

When on battery back up

Press the main power button for 3 seconds, the UPS will switch off after a long beep.

UPS Working Modes

Please go through the trouble shooting chart below for the most common problems. If the UPS fails to operate properly, please review the flowing steps before calling the service center.

- Is the UPS plugged in to the correct working outlet?
- Is the line voltage within the specified rating?
- Is the fuse, breaker or circuit protector on the back-panel open?

Please submit the following information to your closest service center.

- Model number and serial number.
- Date of problem occurrence.
- Full description of the problem.

UPS trouble shooting chart

Symptoms	Possible causes	Actions to take
UPS overloaded and not connecting to AC	UPS overloaded and not connecting to AC	Please connect AC and reduce load
	The input fuse is burnt or the breaker is off	Replace the fuse or reset the breaker. Remove some of the load and check if the load has a short-circuit or is faulty.
	UPS overloaded and not connecting to AC	Please connect AC and reduce load
	The UPS had failed	Please contact your service center for repair or replacement.
The buzzer beeps every 8 seconds	The UPS switches to battery mode with the utility present	Save the work on your PC and shut down the operating system.
The buzzer beeps every 1 second	Back-up time less than a minute	Turn off the system and restart to charge again.
Back-up time less than specified	Overload	Please reduce load
	Battery not fully charged	Recharge the battery for atleast 12 hours and chech again.
	Charging unit fault	Please send to the service center for repair or repalcement.

Installation and Operation

Before installation, please read and understand the following instructions:

Inspect the following items inside box

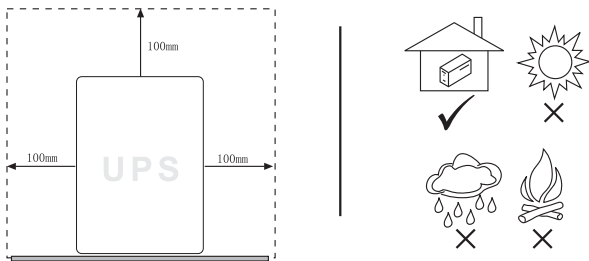
- User's Manual
- UPS
- Mains Cord

Unpacking and inspection

Examine the packing carton for damage. Notify your dealer immediately if damage is observed. Store the packing in a safe place for possible future trans-shipment of the UPS.

Positioning the UPS

Position the UPS on a sturdy, dry surface in a well-ventilated area away from direct sources of heat. Leave at least 100 mm clearance all around the UPS to provide adequate ventilation.

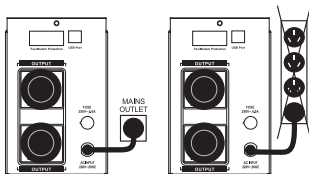


The UPS is intended for indoor use only. Although your UPS is very rugged, its internal components are not sealed from the environment. Kindly note the following:

- Avoid direct sunlight.
- Avoid excessive heat.
- Avoid excessive humidity or liquids.
- Avoid excessive dust.

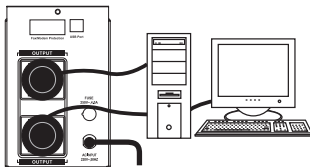
Connect the UPS to power.

Connect the Power Cord, to a verified grounded 3-wire receptacle. Do not power the UPS using a surge suppressor or power strip. Switch the utility power ON.

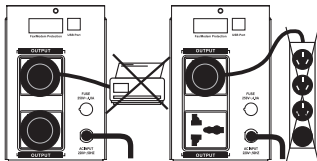


Connect the equipment to the UPS

Now connect your load to be protected (computer, monitor etc.) to the AC Output receptacles at the rear of the UPS.



Do not connect a surge suppressor, power strip, or extension cord to the UPS outlet.



Enable the UPS by turning on the Power ON/OFF switch, which is situated on the front panel.

The UPS is now ready to use. Switch on your equipment and you are ready to function.

Safety Notice

The product contains voltages, which are potentially hazardous. Qualified service personnel should perform all repairs. Do not try to open the cover and to service the system yourself, no user serviceable parts inside. Refer servicing to qualified service personnel only. The product has its own internal energy source (battery). The output receptacles may be live even when the product is not connected to an AC supply.

Warning

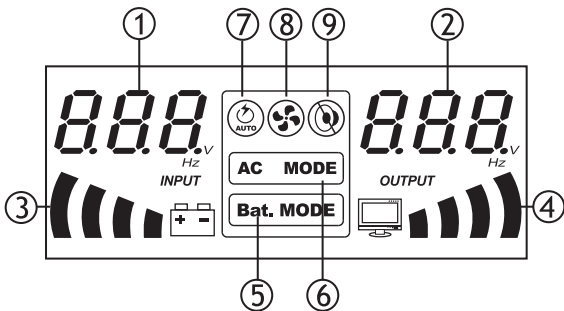
In case of fire risky, please change the fuse with the same kind and same rate or reset the breaker. The product is intended for indoor use only. Kindly note to avoid excessive heat, dust, humidity or liquids.

BATTERY MAINTENANCE / BATTERY CHARGING

AFTER SHIPMENT FROM THE FACTORY THE BATTERY NEEDS RECHARGING. IF NOT USED FOR A LONG PERIOD OF TIME, THE BATTERY WILL START SELF-DISCHARGING, WHICH MAY RESULT IN A SHORT SERVICE LIFE OF THE BATTERY OR MAY EVEN CAUSE DAMAGE TO IT DURING WARRANTY PERIOD. CARE SHOULD ALSO BE TAKEN TO AVOID EXCESSIVE TEMPERATURE AROUND THE UPS, WHICH COULD ALSO RESULT IN REDUCING SERVICE LIFE OF THE BATTERY. TO ACHIEVE MAXIMUM SERVICE LIFE FROM THE BATTERY THE ABOVE INSTRUCTIONS SHOULD BE FOLLOWED.

The UPS battery charges whenever the UPS is connected to utility power & is switched ON. It typically requires more than 12 hours to charge fully. Operating runtime is reduced until the battery is fully charged.

LCD Display



- ① AC input voltage
- ② Output voltage
- ③ Battery capacity
- ④ Load level
- ⑤ UPS is working in battery mode
- ⑥ UPS is working in AC mode
- ⑦ UPS can turn on automatically
- ⑧ Fan is working (models without fan have no indication)
- ⑨ Alarm is on mute except when UPS is on over-load or low battery.

LCD Display

1) When UPS is charging

When battery is not fully charged, the battery capacity indicator will continuously increase the level indicator which shows that the UPS is charging.

When the battery is fully charged, the battery capacity indicator will show full on the level indicator.

2) When UPS is in AC mode

- ① AC input voltage
- ② UPS output voltage
- ③ Level of battery capacity and if the battery is charging
- ④ The load level. If overloaded, the load level indicator flickers and overload alarm comes on

2) When UPS is in battery mode

- ① No AC input indication
- ② Battery output voltage in battery mode
- ③ Battery level indicator. If the battery is low, the indicator flickers and the UPS beeps every one second
- ④ The load level. If overloaded, the load level indicator flickers and overload alarm comes on

Warranty Certificate

Serial No

Customer Name

Contact Person

Address

Telephone No

Email Address

Date Of Puchase

Dealer Signature

Customer Signature

www.shield.systems